

UCD-422

HDMI 2.1 Video Generator & Analyzer



10K Video Generator & Analyzer

UCD-422 is a video generator and analyzer for testing HDMI 2.1 interface up to 10K video modes. Resolutions supported are 4K@120Hz, 8K@60Hz and 10K@30Hz with uncompressed video. UCD-422 offers support for FEC, DSC and eARC. HDCP 1.4 and HDCP 2.2/2.3 are also supported. Any video format, audio format, frame rate, video timing, and inframes including timestamps can be played by UCD-422. There are no restrictions on the output of video formats.

UCD Console GUI

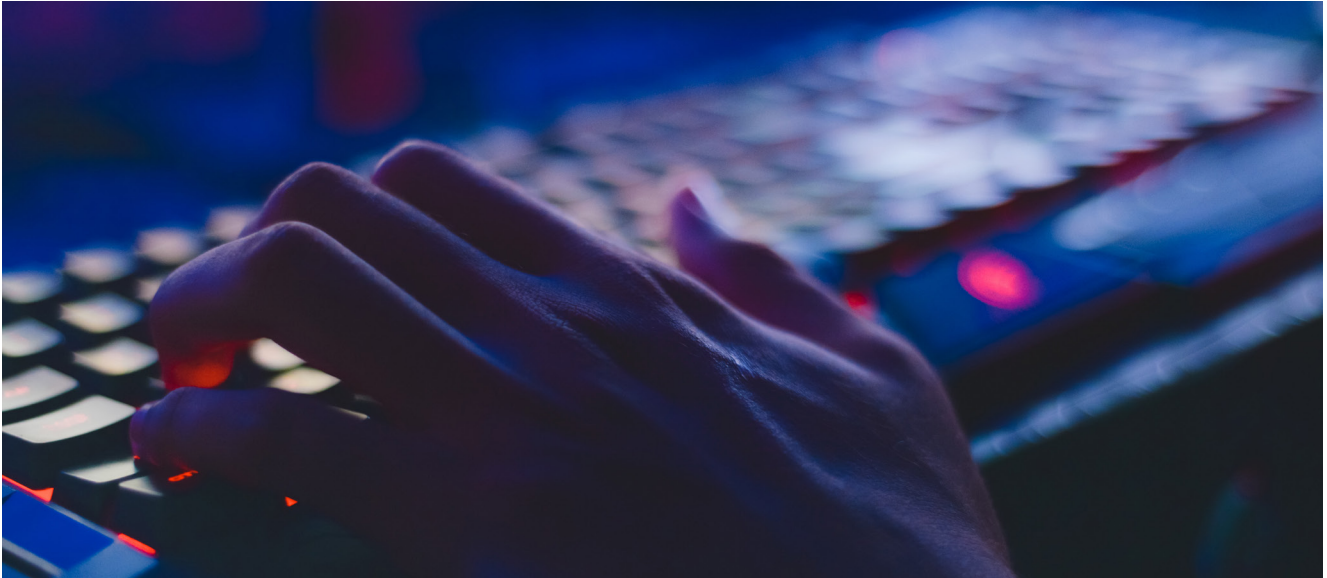
UCD Console is Unigraf's common Graphical User Interface (GUI) for all UCD series products. UCD Console is available for Windows, Linux and macOS operating systems. UCD Console enables users to access all test features of the UCD-422. It provides users with a flexible way of navigating between its sink and source roles and functionalities of each role. Available functionalities include preview windows for the built-in pattern generator and received video and audio, data logger for AUX and metadata content, link and DPCD register monitoring and control dialogs, EDID editor, HDCP status and control functions.

Highlights

- HDMI 2.1 Test Equipment (FRL/TMDS)
- Variable Refresh Rate (VRR)
- Auto Low Latency Mode (ALLM)
- Forward Error Correction (FEC)
- HDCP 1.4 & HDCP 2.2/2.3 Support
- Dolby Vision, HDR 10 and HDR 10+ Test Tool*
- 10K@30Hz Support
- 8K@60Hz Support
- eARC Support *
- DSC Support

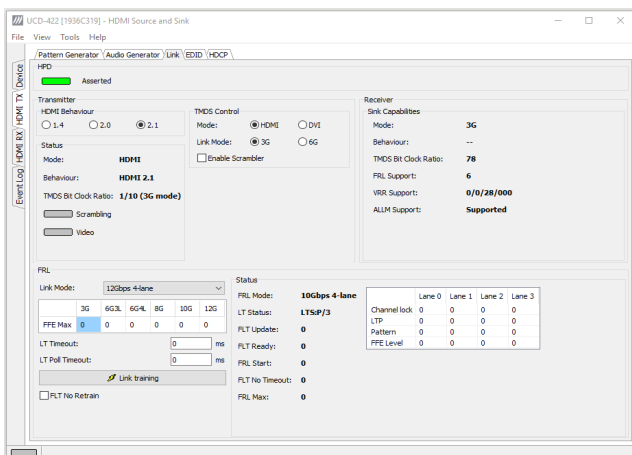
*) Please contact Unigraf for detailed availability

UCD-422 HDMI 2.1 Video Analyzer & Generator



Enhanced Gaming Features

Check the availability of enhanced gaming features on sink and source devices that support Variable Refresh Rate (VRR) and Auto Low Latency Mode (ALLM). Check full range of VRR from 40 Hz to 120 Hz. Ready-made scenarios for ALLM testing are available in the UCD-422. By supporting these enhanced gaming features, the UCD-422 makes for a complete test tool for game console and display manufacturers.



Fixed Rate Linked (FRL)

Fixed Rate Link (FRL) is the new video transport method in HDMI 2.1. The UCD-422 can identify interoperability issues on FRL capable source and sink devices. Users can verify if an image is captured correctly on the UCD Console when testing source devices using different FRL modes.

Specifications

Input	HDMI 2.1 (10K@30Hz) (HDMI Rx)
Output	HDMI 2.1 (10K@30Hz) (HDMI Tx)
HDMI 2.1 Features	FRL, TMDS, ALLM, VRR
Content Protection	HDCP 1.4, HDCP 2.2, HDCP 2.3
Additional features	eARC*, DSC*, FEC
Computer Interface	USB 3.0
Operating System	Windows 10, 8 and 7
Software	UCD Console GUI TSI API with interface specific Test Sets
Power Input	AC/DC Power supply 100 to 240 Vac 50/60 Hz input, +12 Vdc output
Module Size	311 x 197 x 65 mm
Weight	1.2 kg w/o power supply

*) Please contact Unigraf for detailed availability

