

Printer Driver

Installation Guide

This guide describes installation of the Printer Driver for, Windows 8, Windows 7, Windows Vista, Windows XP, and Windows 2000.

Before Using this Software

Before using the printer driver, be sure to read the "Readme" file.

Table of Contents

Operation Environment Requirements	3
About This Document	4
Installing the Printer Driver in	
Windows 8	4
Before Installation	4
Installation in Windows 8	4
Uninstalling the Printer Driver in	
Windows 8	7
Installing the Printer Driver in	
Windows 7	8
Before Installation	8
Installation in Windows 7	8
Uninstalling the Printer Driver in	
Windows 7	11
Installing the Printer Driver in	
Windows Vista	12
Before Installation	12
Installation in Windows Vista	12
Uninstalling the Printer Driver in	
Windows Vista	15
Installing the Printer Driver in	
Windows XP	16
Before Installation	16
Installation in Windows XP	16
Uninstalling the Printer Driver in	
Windows XP	18
Installing the Printer Driver in	
Windows 2000	19
Before Installation	19
Installation in Windows 2000	19
Uninstalling the Printer Driver in	
Windows 2000	22

Microsoft and Windows are registered trademarks of Microsoft Corporation.
Other company names and product names mentioned in this guide are also trademarks and registered trademarks.

Operation Environment Requirements

Note

When the printer is connected and turned on, ensure that the computer does not go into sleep, standby (suspended), or hibernation mode. Otherwise correct operation is not assured.

To use the printer driver, your computer must be running one of the following operating systems.

- Computer that can run on Microsoft Windows 8
- Computer that can run on Microsoft Windows 7
- Computer that can run on Microsoft Windows Vista
- Computer that can run on Microsoft Windows XP Professional/Home Edition
- Computer that can run on Microsoft Windows 2000 Professional

For information on the operating systems compatible with your printer, refer to Compatible OS chart on the Sony website.

http://www.sony.net/Products/DP-driver/os/win_mp.html

About USB 2.0

- The printer conforms to USB 2.0 specifications.
- USB 2.0 is fully backward compatible with USB 1.1.
- USB 2.0 supports conventional Full (low) speed and Hi-Speed operation.
- In a USB 1.1 environment, connection and operation at Full speed is possible. For Hi-Speed operation, the following requirements must be met.
 - Computer
Computer supporting Hi-Speed USB (USB 2.0 compliant)*
 - Operating system
Windows 8, Windows 7, Windows Vista, Windows XP Professional/Home Edition, or Windows 2000 Professional
 - USB 2.0 driver
USB 2.0 device driver produced by Microsoft Corporation (Operation with other USB 2.0 drivers is not guaranteed.)
 - Certified USB 2.0 cable

* Compatibility with all USB 2.0 devices, USB 2.0 expansion boards, or expansion cards cannot be guaranteed.

Work in the following screen settings.

- Display resolution SVGA (800×600) or more
- Default character size
Windows 2000: Smaller
Windows XP: Normal size (96DPI)
Windows Vista: Default scale (96 DPI) - fit more information
Windows 8 or Windows 7: Smaller - 100% (default)

About This Document

The explanation of Control Panel operations in this document assumes Windows XP or Windows Vista in Classic View. To switch to Classic View, click [Start], select [Control Panel], and click [Switch to Classic View] in the Control Panel Properties shown on the left side of the screen.

The screen messages shown in this guide assume that a UP-D25MD printer is connected. If you are using a printer of a different model, replace any occurrence of “UP-D25MD” with the model name of your printer while reading the screen messages in this guide.

This guide explains how to install and uninstall the printer driver in computers running on the following operating systems: Microsoft Windows 8, Windows 7, Windows Vista, Windows XP and Windows 2000. Follow the instructions for your operating system.

Installing the Printer Driver in Windows 8

Before Installation

Note

Do not connect the printer to your computer before installing the printer driver. If the printer is connected beforehand, it may not be recognized by the computer.

About version upgrades

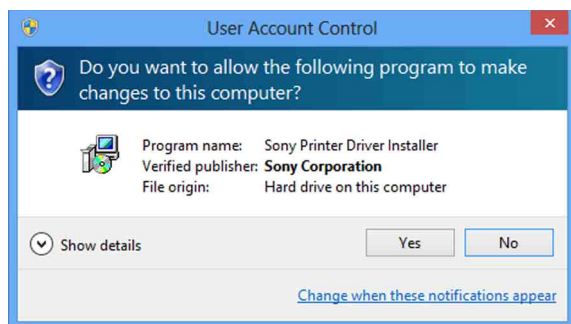
If you are upgrading a printer driver, remove the previous printer driver before beginning the installation. For details on the procedure to remove the printer driver, refer to the section “Uninstalling the Printer Driver in Windows 8” in this guide.

If the installation fails or is cancelled, restart your computer before attempting the installation again.

Installation in Windows 8

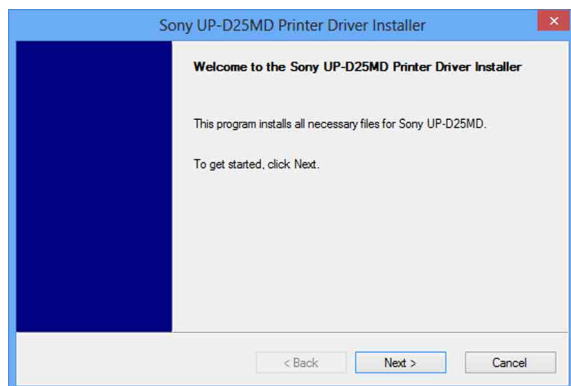
- 1 Turn on the computer, and log on as the system administrator or a member of the Administrators group.
- 2 Run “Setup.exe” which can be found in the “PrinterDriver\Win8” folder on the supplied CD-ROM (or downloaded from the Sony website).

The [User Account Control] dialog box appears.



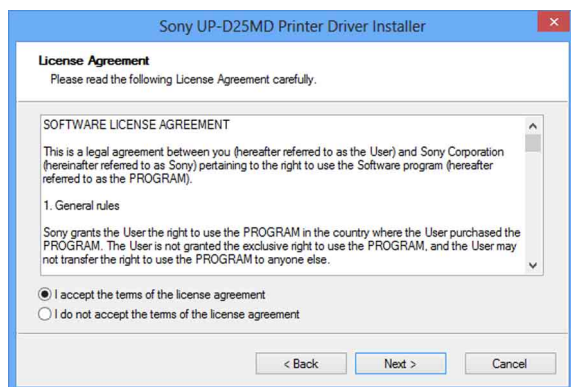
3 Click [Yes].

The following dialog box appears.



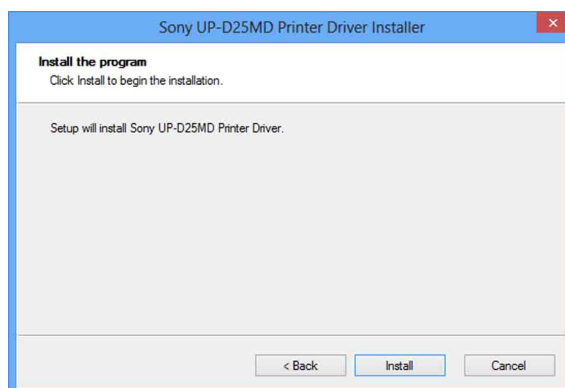
4 Click [Next].

The end user license agreement appears.



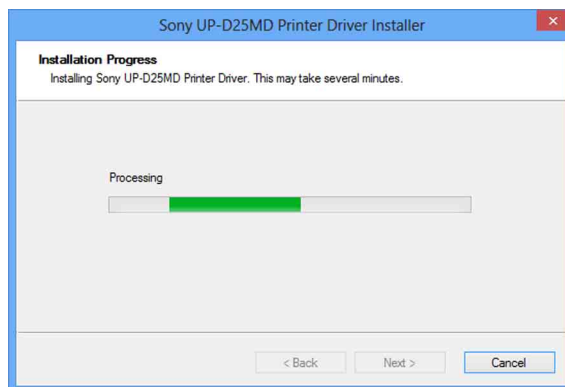
5 Select [I accept the terms of the license agreement], and then click [Next].

The following dialog box appears.



6 Click [Install].

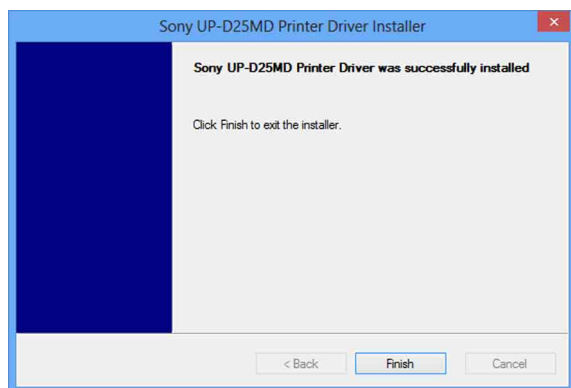
Installation starts. The status of installation appears in the dialog box while installation is in progress.



If the following dialog box appears while installation is in progress, click [Install].



When installation finishes, the following dialog box appears.



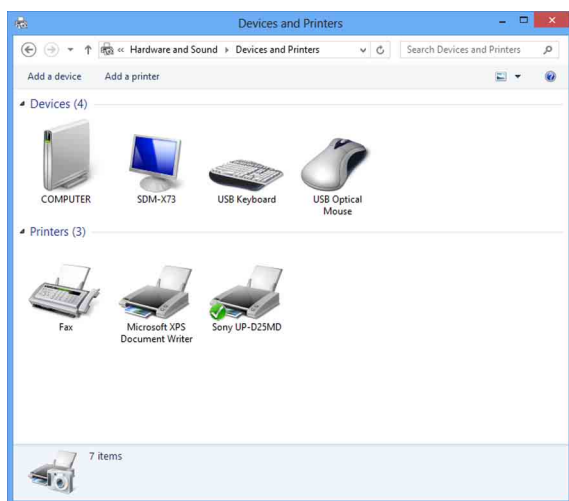
7 Click [Finish].

8 Connect the printer to the computer.

This completes installation of the printer driver.

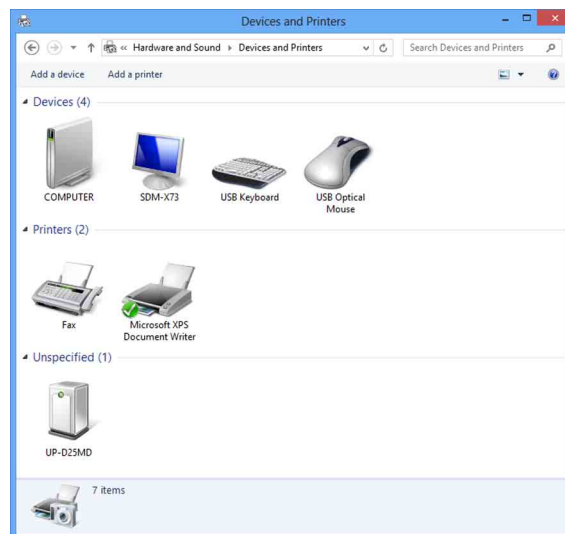
You can click [Settings], select [Control Panel], and then select [View devices and printers] to confirm whether the printer is recognized by the computer.

If the printer is recognized by the computer, a printer icon should appear under [Printers] as follows.



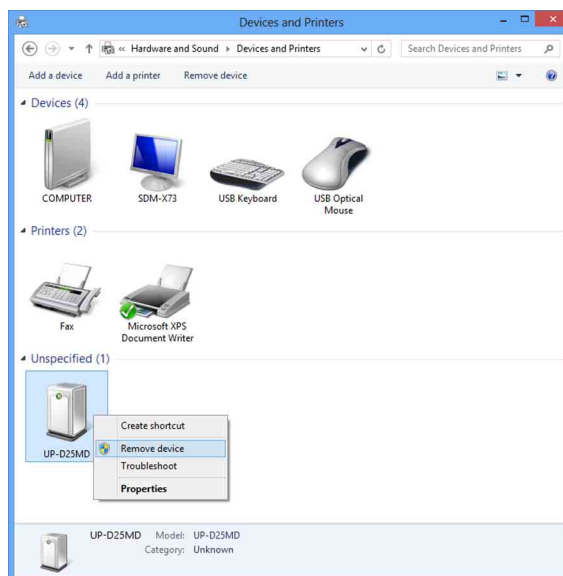
If your computer does not recognize the printer

If you connected the printer to the computer before installing the printer driver, the printer may appear under [Unspecified] instead of under [Printers]. If this occurs, the printer is not recognized by the computer and cannot be used.

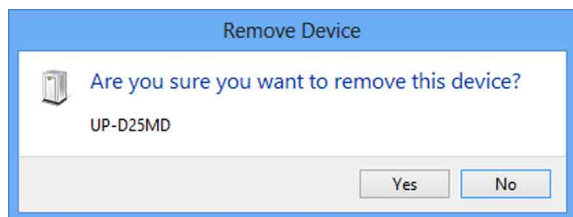


In such cases, update the printer driver as follows.

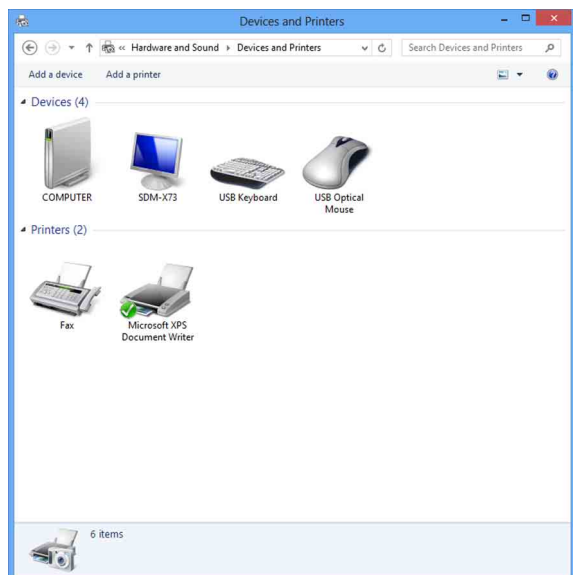
- 1** Confirm that the printer for which the printer driver is to be installed is turned on and connected to the computer. (Any other USB printers or previously installed printers should not be connected at this time.)
- 2** Click [Settings], select [Control Panel], and then select [View devices and printers].
- 3** Right-click the printer icon under [Unspecified], and then select [Remove device].



- 4 When the following dialog box appears, click [Yes].



- 5 The printer under [Unspecified] in [View devices and printers] is removed.



- 6 Disconnect the cable connecting the printer to the computer.
- 7 If you did not install the printer driver, perform the steps in "Installation in Windows 8" to install the printer driver.
- 8 Connect the printer to the computer.

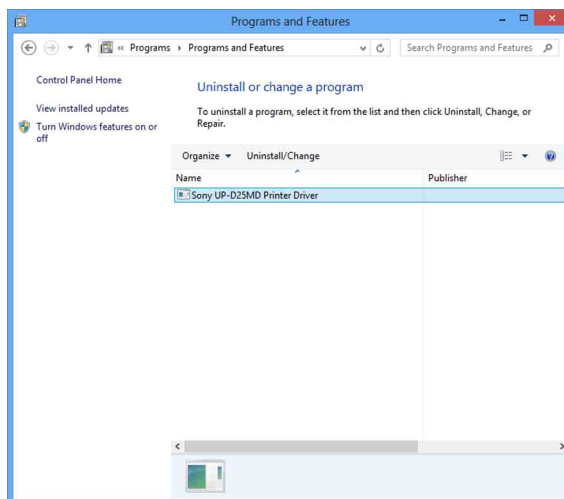
This completes update of the printer driver.

Uninstalling the Printer Driver in Windows 8

Note

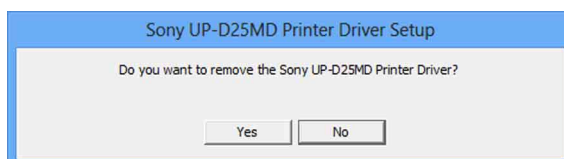
Be sure to disconnect the printer from the computer and turn off the computer before starting the uninstall procedure. If the [Found New Hardware] dialog box appears, disconnect the cable connecting the printer to the computer, click [Cancel], and close the dialog box. Afterward, restart the uninstall procedure.

- 1 Turn off the printer and disconnect the cable connecting it to the computer.
- 2 Turn on the computer, and log on as the system administrator or a member of the Administrators group.
- 3 Click [Settings], select [Control Panel], and then select [Uninstall a program].



- 4 Select the printer driver from the [Uninstall or change a program] list, and then click [Uninstall/Change].

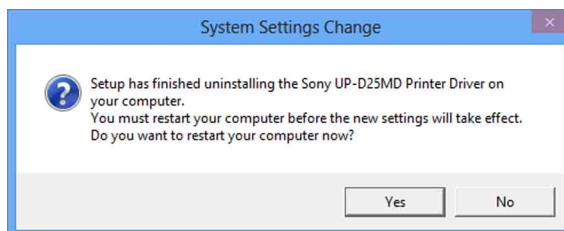
The following dialog box appears.



- 5 Click [Yes].

Uninstallation starts.

When uninstallation finishes, the following dialog box appears.



- 6 Click [Yes].

The computer restarts.

This completes uninstallation of the printer driver.

Installing the Printer Driver in Windows 7

Before Installation

Note


Do not connect the printer to your computer before installing the printer driver. If the printer is connected beforehand, it may not be recognized by the computer.

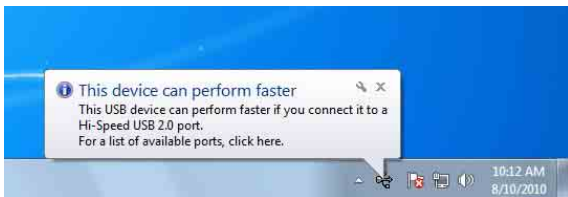
About version upgrades

If you are upgrading a printer driver, remove the previous printer driver before beginning the installation. For details on the procedure to remove the printer driver, refer to the section “Uninstalling the Printer Driver in Windows 7” in this guide.

If the installation fails or is cancelled, restart your computer before attempting the installation again.

USB 2.0 connection

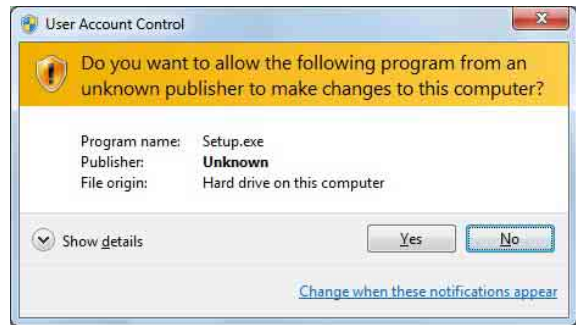
The printer conforms to USB 2.0 specifications. However, if your computer or USB hub is not USB 2.0-compliant, the following message appears when you connect the printer. Click  to close the message.



Installation in Windows 7

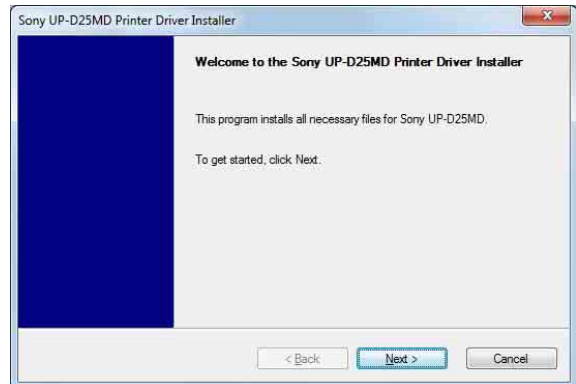
- 1 Turn on the computer, and log on as the system administrator or a member of the Administrators group.
- 2 Run “Setup.exe” which can be found in the “PrinterDriver\Win7” folder on the supplied CD-ROM (or downloaded from the Sony website).

The [User Account Control] dialog box appears.



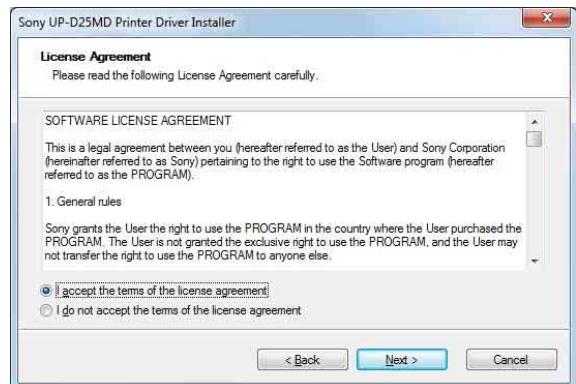
- 3 Click [Yes].

The following dialog box appears.



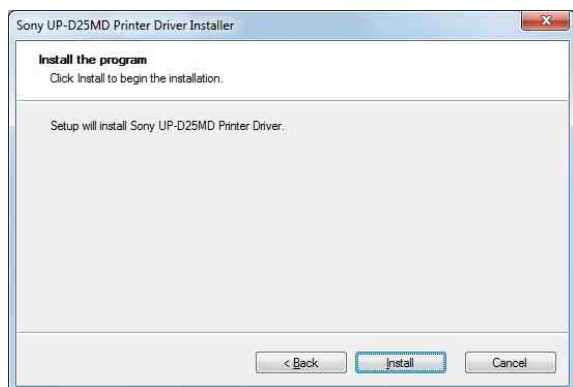
- 4 Click [Next].

The end user license agreement appears.



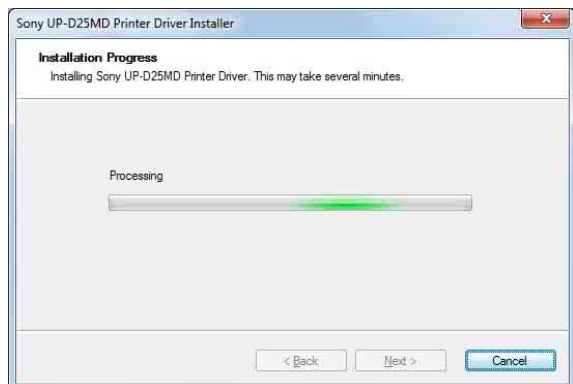
- 5 Select [I accept the terms of the license agreement], and then click [Next].

The following dialog box appears.



- 6 Click [Install].

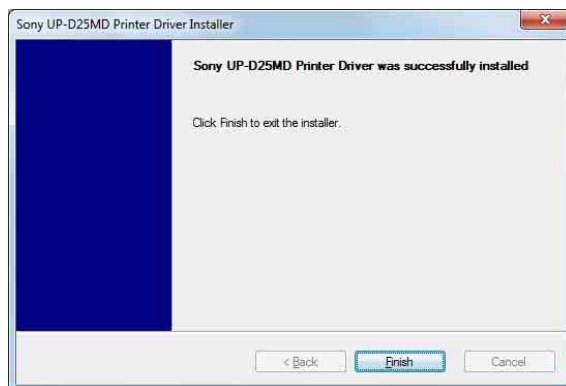
Installation starts. The status of installation appears in the dialog box while installation is in progress.



If the following dialog box appears while installation is in progress, click [Install this driver software anyway].



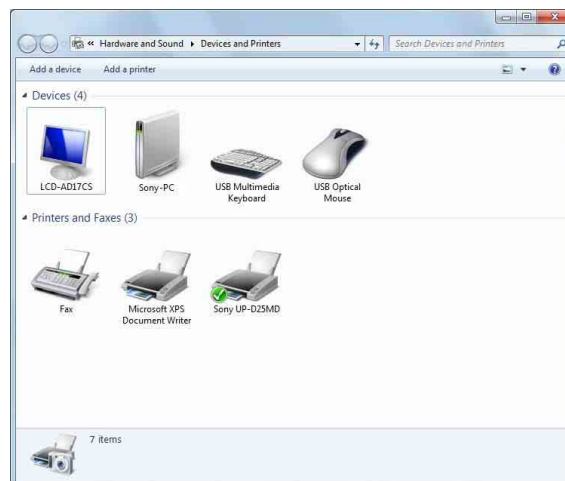
When installation finishes, the following dialog box appears.



- 7 Click [Finish].
- 8 Connect the printer to the computer.

This completes installation of the printer driver.

You can click [Start], select [Control Panel], and then select [View devices and printers] to confirm whether the printer is recognized by the computer. If the printer is recognized by the computer, a printer icon should appear under [Printers and Faxes] as follows.



If your computer does not recognize the printer

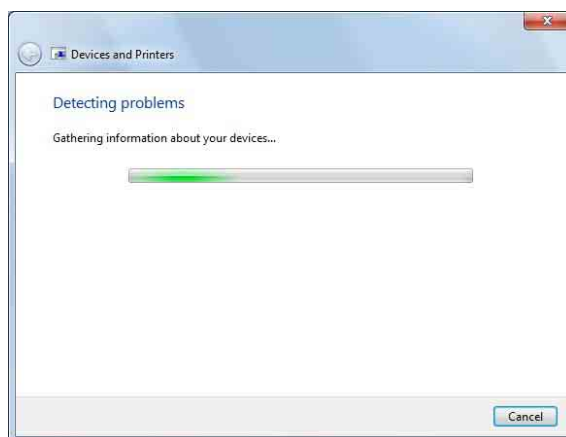
If you connected the printer to the computer before installing the printer driver, the printer may appear under [Unspecified] instead of under [Printers and Faxes]. If this occurs, the printer is not recognized by the computer and cannot be used.



In such cases, update the printer driver as follows.

- 1 Disconnect the cable connecting the printer to the computer.
- 2 If you did not install the printer driver, perform the steps in “Installation in Windows 7” to install it now.
- 3 Connect the printer to the computer.
- 4 Click [Start], select [Control Panel], and then select [View devices and printers].
- 5 Right-click the printer icon under [Unspecified], and then select [Troubleshoot].

The following dialog box appears.

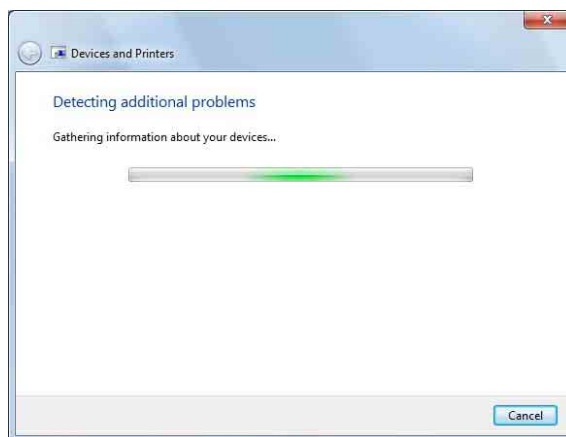


The screen changes as follows after a few moments.

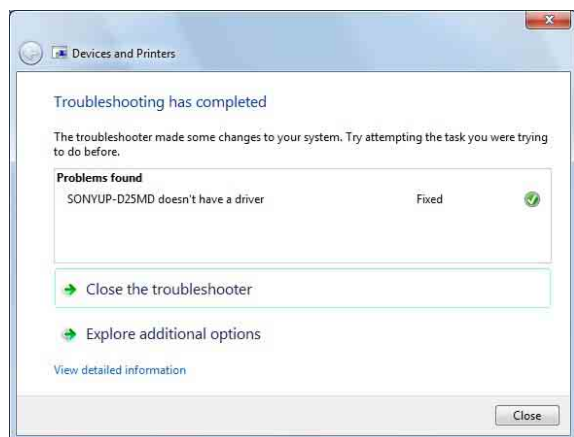


- 6 Click [Apply this fix].

The following dialog box appears.



The screen changes as follows after a few moments.



- 7 Click [Close].

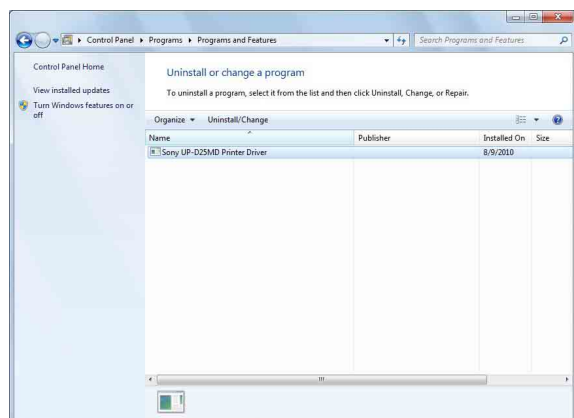
This completes update of the printer driver.

Uninstalling the Printer Driver in Windows 7

Note

Be sure to disconnect the printer from the computer before starting the uninstall procedure. If the [Found New Hardware] dialog box appears, disconnect the cable connecting the printer to the computer, click [Cancel], and close the dialog box. Afterward, restart the uninstall procedure.

- 1 Turn off the printer and disconnect the cable connecting it to the computer.
- 2 Turn on the computer, and log on as the system administrator or a member of the Administrators group.
- 3 Click [Start], select [Control Panel], and then select [Uninstall a program].



- 4 Select the printer driver from the [Uninstall or change a program] list, and then click [Uninstall/Change].

The following dialog box appears.



- 5 Click [Yes].

Uninstallation starts.

When uninstallation finishes, the following dialog box appears.



- 6 Click [Yes].

The computer restarts.

This completes uninstallation of the printer driver.

Installing the Printer Driver in Windows Vista


Before Installation

About version upgrades

If you are upgrading a printer driver, remove the previous printer driver before beginning the installation. For details on the procedure to remove the printer driver, refer to the section “Uninstalling the Printer Driver in Windows Vista” in this guide.

If the installation fails or is cancelled, restart your computer before attempting the installation again.

USB 2.0 connection

The printer conforms to USB 2.0 specifications. However, if your computer or USB hub is not USB 2.0-compliant, the following message appears when you connect the printer. Click  to close the message.



Installation in Windows Vista

- 1 Connect the printer (only one) for which you want to install the driver to the computer.
- 2 Turn on the connected printer.
- 3 Turn on the computer, and log on as the system administrator or a member of the Administrators group.

The [Found New Hardware] dialog box appears.

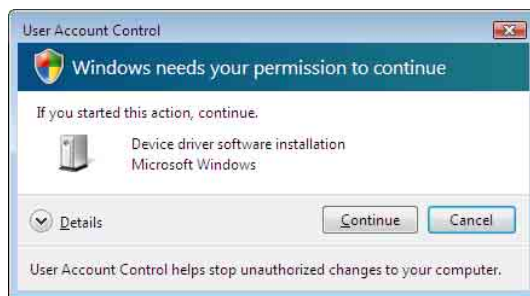


If the “Device driver software was not successfully installed” message appears and the [Found New Hardware] dialog box does not appear, try disconnecting and connecting the USB cable again. If the [Found New Hardware] dialog box still does not appear, perform the steps described below, with the printer for which the printer driver is to be installed turned on and connected to the computer. (Any other USB printers or previously installed printers should not be connected at this time.)

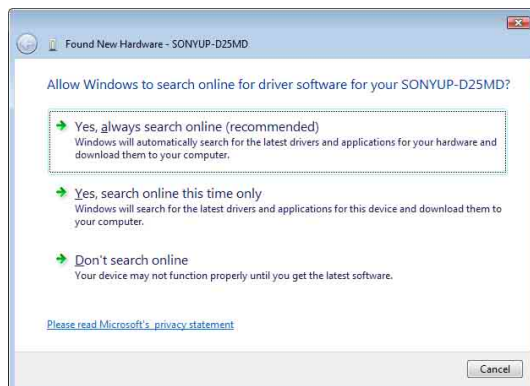
- ① Click [Start] and select [Control Panel].
- ② Double-click [System].
- ③ Click [Device Manager].
The [User Account Control] dialog box appears.
- ④ Click [Continue].
The [Device Manager] window appears.
- ⑤ Click [+] at the left of [Universal Serial Bus controllers].
- ⑥ Select [USB Printing support], and then select [Uninstall] from the [Action] menu.
- ⑦ Restart the computer.
The [Found New Hardware] dialog box appears.

- 4 Click [Locate and install driver software (recommended)].

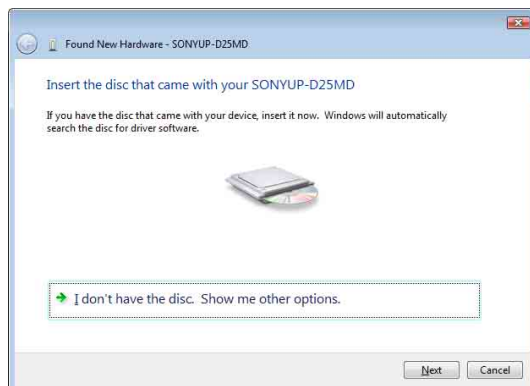
The following dialog box appears.



- 5 Click [Continue].
- 6 Click [Don't search online] if the following dialog box appears.



The screen changes as follows.

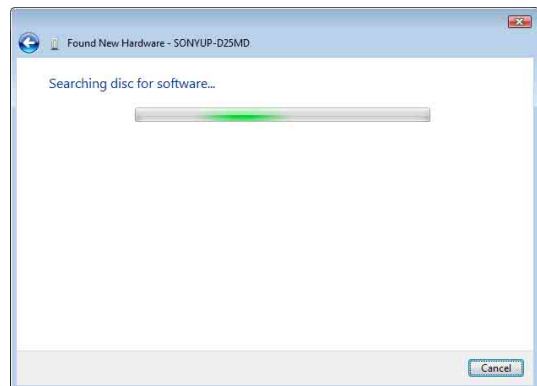


From here, the procedure differs depending on whether you use the supplied CD-ROM or not (if you downloaded the driver online).

Procedure with the supplied CD-ROM

- 7 Insert the supplied CD-ROM into the CD-ROM drive.

The screen changes as follows.

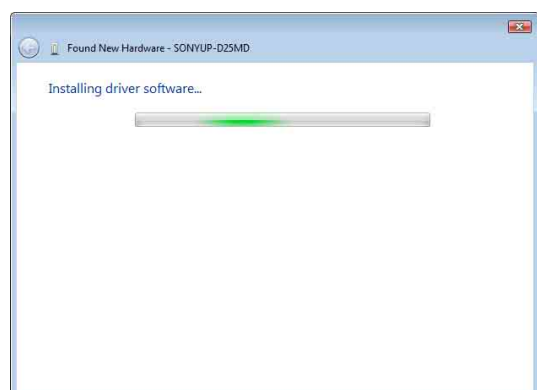


After the search for software is finished, the following dialog box appears.

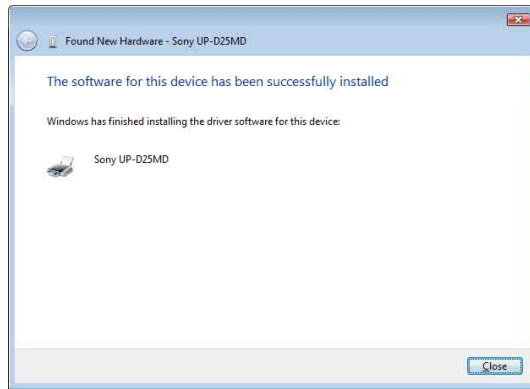


- 8 Click [Install this driver software anyway].

The dialog box closes, and the [Found New Hardware] dialog box reappears.



After the files are copied, the screen changes as follows.



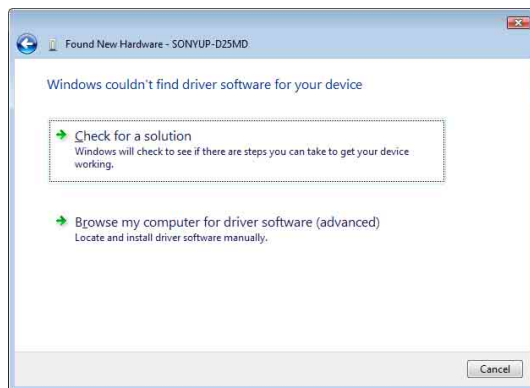
- 9 Click [Close].

This completes installation of the printer driver.

Procedure without the supplied CD-ROM

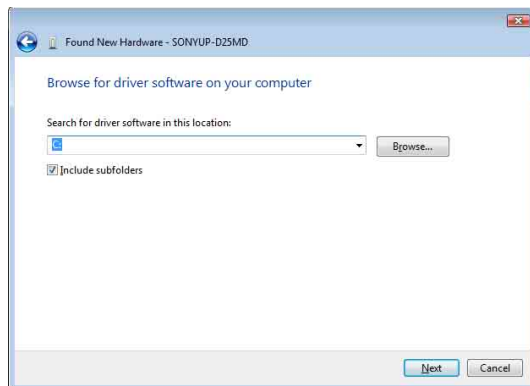
- 7 Click [I don't have the disc. Show me other options].

The screen changes as follows.



- 8 Click [Browse my computer for driver software (advanced)].

The screen changes as follows.



- 9 Click [Browse] to open the [Browse For Folder] dialog box. Specify the folder in which the installation file you downloaded was extracted, and then click [OK] to close the [Browse For Folder] dialog box.

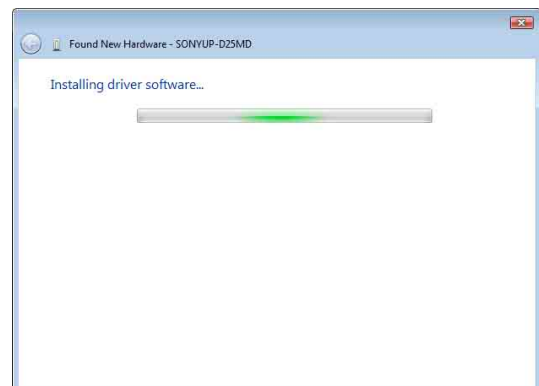
- 10 Click [Next].

The following dialog box appears.

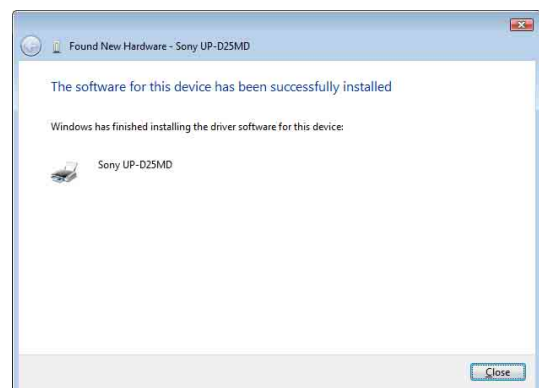


- 11 Click [Install this driver software anyway].

The dialog box closes, and the [Found New Hardware] dialog box reappears.



After the files are copied, the screen changes as follows.



- 12 Click [Close].

This completes installation of the printer driver.

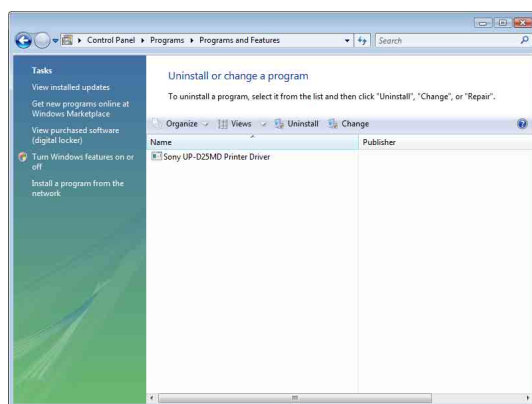
Uninstalling the Printer Driver in Windows Vista

This section describes how to remove the printer driver.

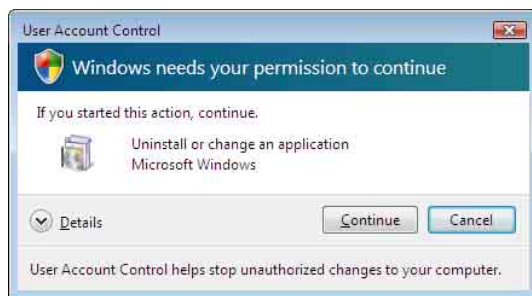
Note

When starting the uninstallation procedure, the printer should not be connected to the computer. If the [Found New Hardware] dialog box appears, disconnect the cable between the computer and printer, click [Cancel] on all screens to close the dialog box, and then start the uninstallation procedure once more.

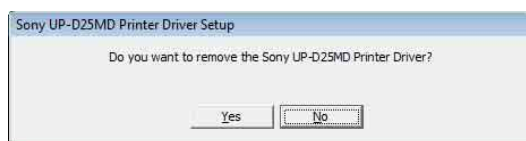
- 1 Turn off the printer, and disconnect the cable between the computer and printer.
- 2 Turn on the computer, and log on as the system administrator or a member of the Administrators group.
- 3 Click [Start], select [Control Panel], and then select [Programs and Features].



- 4 Select the printer driver from the [Uninstall or change a program] list, and then click [Uninstall/Change].



- 5 Click [Continue].



- 6 Click [Yes].

When the printer driver has been uninstalled, the following dialog box appears.



- 7 Click [Yes].

The computer restarts.

This completes uninstallation of the printer driver.

Installing the Printer Driver in Windows XP

Before Installation

About Version Upgrades


If you are upgrading a printer driver, remove the previous printer driver before beginning the installation. For details on the procedure to remove the printer driver, refer to the section “Uninstalling the Printer Driver in Windows XP” in this guide.

If the installation fails or is cancelled, restart your computer before attempting the installation again.

Note

Be sure to restart your computer after installing or uninstalling the printer driver. Unless you reboot, unstable operation may result.

USB 2.0 Connection

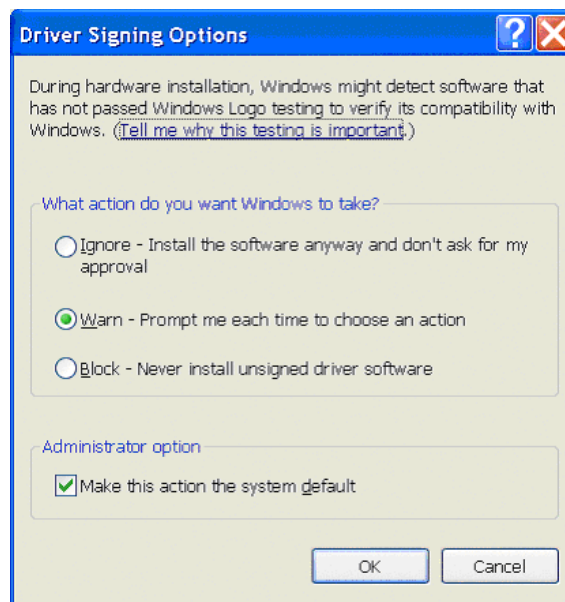
The printer is compatible with USB 2.0. However, if your computer or USB hub is not USB 2.0-compliant, the following message appears when you connect the printer. Click  to close the message.



About Driver Signing Options

The present printer driver has not passed Windows Logo testing, therefore when you install the driver an error message may appear, preventing you from installing the driver.

In the [Driver Signing Options] dialog box, select [Ignore] or [Warn] in the [What action do you want Windows to take?] group box. If you select [Block], you cannot install the printer driver.



Open the [Driver Signing Options] dialog box as follows:

- ① On the [Start] menu, click [Control Panel].
- ② Double-click [System].
The [System Properties] dialog box opens.
- ③ Click the [Hardware] tab.
- ④ Click the [Driver Signing] button.

All the explanations in this guide assume that the setting in this dialog box is [Warn].

Installation in Windows XP

- 1 Connect the printer (only one) for which you want to install the driver to the computer.
- 2 Turn on the connected printer.
- 3 Turn on the computer, and then log on as the system administrator or a member of the Administrators group.

The [Found New Hardware Wizard] dialog box opens.



- If the same [Found New Hardware Wizard] dialog box as in step 3 appears, proceed to step 4.
- If a [Found New Hardware Wizard] dialog box other than the one in step 3 appears, proceed to step 5.
- If the [Found New Hardware Wizard] dialog box does not appear, perform the following operations while the printer to be installed is still turned on and connected to the computer. (Any other USB printers or printers previously installed should not be connected at this time.)
 - ① On the [Start] menu, click [Control Panel].
 - ② Double-click [System].
The [System Properties] dialog box opens.
 - ③ Click the [Hardware] tab.
 - ④ Click the [Device Manager] button.
The [Device Manager] window opens.
 - ⑤ Click [+] at the left of [Universal Serial Bus controllers].
 - ⑥ Right-click [USB Printing support], and open [Properties]. Confirm that the model name of the printer currently connected is selected for [Location], and then select [Uninstall] from the [Action] menu.
 - ⑦ Restart the computer.
After Windows XP starts, the [Found New Hardware Wizard] dialog box opens.

4 Click [No, not this time] and click [Next].



5 Select [Install from a list or specific location (Advanced)], and then click the [Next] button.

The following screen opens.



6 Specify the location of the printer driver installation file.

The procedure differs depending on whether you use the supplied CD-ROM or not (if you downloaded the driver online).

Procedure with the supplied CD-ROM

Select [Search for the best driver in these locations] and [Search removable media (floppy, CD-ROM...)], and then insert the supplied CD-ROM into the CD-ROM drive.

Procedure without the supplied CD-ROM

Select [Search for the best driver in these locations] and [Include this location in the search], and then click [Browse] to open the [Browse For Folder] dialog box. Specify the folder in which the installation file you downloaded was extracted, and then click [OK] to close the [Browse For Folder] dialog box.

7 Click the [Next] button.

The following dialog box opens.



- 8 Click the [Continue Anyway] button.

After the files are copied, the following screen opens.



- 9 Click the [Finish] button.

This completes the installation of the printer driver with Windows XP.

- 10 Restart the computer.

Uninstalling the Printer Driver in Windows XP

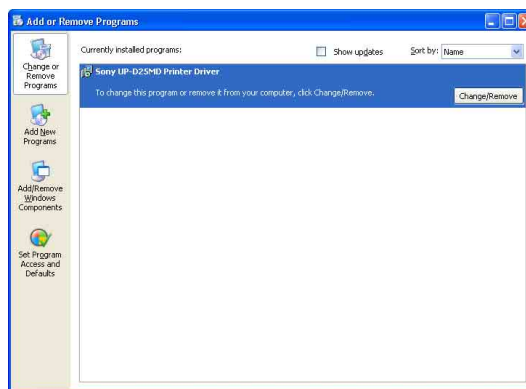
This section describes how to remove the printer driver.

Note

When starting the uninstallation procedure, the printer should not be connected to the computer. If the [Found New Hardware Wizard] dialog box appears, disconnect the cable between the computer and printer, click [Cancel] on all screens to close the dialog box, and then start the uninstallation procedure once more.

- 1 Turn off the printer, and disconnect the cable between the computer and printer.
- 2 Turn on the computer, and log on as the system administrator or a member of the Administrators group.

- 3 Click [Start], select [Control Panel], and then select [Add or Remove Programs].



- 4 Select the printer driver from the [Currently installed programs] list, and then click [Change/Remove].

The following screen opens.



- 5 Click [Yes].

When the printer driver has been uninstalled, the following dialog box appears.



- 6 Click [Yes].

The computer restarts.

This completes uninstallation of the printer driver.

Installing the Printer Driver in Windows 2000

Before Installation

About Version Upgrades

If you are upgrading a printer driver, remove the previous printer driver before beginning the installation. For details on the procedure to remove the printer driver, refer to the section “Uninstalling the Printer Driver in Windows 2000” in this guide.

If the installation fails or is cancelled, restart your computer before attempting the installation again.

Note

Be sure to restart your computer after installing or uninstalling the printer driver. Unless you reboot, unstable operation may result.

About Driver Signing Options

This printer driver has not passed Windows Logo testing, therefore if an error message appears during installation, installation may not be possible. Make sure that [Ignore] or [Warn] is selected under [File signature verification] in the [Driver Signing Options] dialog box. You cannot install the printer driver if [Block] is selected.

Open the [Driver Signing Options] dialog box as follows:

- ① On the [Start] menu, point to [Settings], and then click [Control Panel].
- ② Double-click the [System] button.
The [System Properties] dialog box opens.
- ③ Click the [Hardware] tab.
- ④ Click the [Driver Signing] button.



All the explanations in this guide assume that the setting in this dialog box is [Warn].

Installation in Windows 2000

- 1 Connect the printer (only one) for which you want to install the driver to the computer.
- 2 Turn on the connected printer.
- 3 Turn on the computer, and then log on as the system administrator or a member of the Administrators group.

After Windows 2000 starts, the [Found New Hardware Wizard] dialog box opens.



If the [Found New Hardware Wizard] dialog box does not appear

Perform the following operations while the printer to be installed is still turned on and connected to the computer. (Any other USB printers or previously installed printers should not be connected at this time.)

- ① On the [Start] menu, point to [Settings], and then click [Control Panel].
- ② Double-click [System].
The [System Properties] dialog box opens.
- ③ Click the [Hardware] tab.
- ④ Click the [Device Manager] button.
The [Device Manager] window opens.
- ⑤ Click [+] at the left of [Universal Serial Bus controllers].
- ⑥ Right-click [USB Printing support], and open [Properties]. Confirm that the model name of the printer currently connected is selected for [Location], and then select [Uninstall] from the [Action] menu.
- ⑦ Restart the computer.
After Windows 2000 starts, the [Found New Hardware Wizard] dialog box opens.

- 4 Click the [Next] button.

The following screen opens.



- 5 Select [Search for a suitable driver for my device (recommended)], and then click the [Next] button.

The following screen opens.



Procedure with the supplied CD-ROM

- 6 Insert the provided CD-ROM into the CD-ROM drive.
- 7 Select the [CD-ROM drives] check box, and then click the [Next] button.

The following screen opens.



- 8 Click the [Next] button.



If the [Digital Signature Not Found] dialog box opens, click the [Yes] button.

After the files are copied, the screen changes as follows.



- 9 Click the [Finish] button.

This completes the installation of the printer driver with Windows 2000.

- 10 Restart the computer.

Procedure without the supplied CD-ROM

- 6 Select [Specify a location], and then click the [Next] button.

The screen changes as follows.



- 7 Click the [Browse] button to open the [Locate File] dialog box. Specify the folder in which the installation file you downloaded was extracted, and then click the [Open] button to close the [Locate File] dialog box.

- 8 Click the [OK] button.

The screen changes as follows.



- 9 Click the [Next] button.



If the [Digital Signature Not Found] dialog box opens, click the [Yes] button.

After the files are copied, the screen changes as follows.



- 10 Click the [Finish] button.

This completes the installation of the printer driver with Windows 2000.

- 11 Restart the computer.

Note

If [Cancel] in Step 7 or [No] in Step 8 was selected, the [Found New Hardware Wizard] dialog box may not appear during the next installation. In that case, perform the procedure described in “If the [Found New Hardware Wizard] dialog box does not appear” in Step 3.

Uninstalling the Printer Driver in Windows 2000

This section describes how to remove the printer driver.

Note

When starting the uninstallation procedure, the printer should not be connected to the computer. If the [Found New Hardware Wizard] dialog box appears, disconnect the cable between the computer and printer, click [Cancel] on all screens to close the dialog box, and then start the uninstallation procedure once more.

- 1 Turn off the printer, and disconnect the cable between the computer and printer.
- 2 Turn on the computer, and log on as the system administrator or a member of the Administrators group.
- 3 Click [Start], point to [Settings], and click [Control Panel]. Then double-click [Add/Remove Programs].



- 4 Select the printer driver from the [Currently installed programs] list, and then click [Change/Remove].

The following dialog box appears.



- 5 Click [Yes].

When the printer driver has been uninstalled, the following dialog box appears.



- 6 Click [Yes].

The computer restarts.

This completes uninstallation of the printer driver.